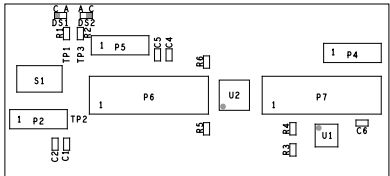


ASSEMBLY NOTES:

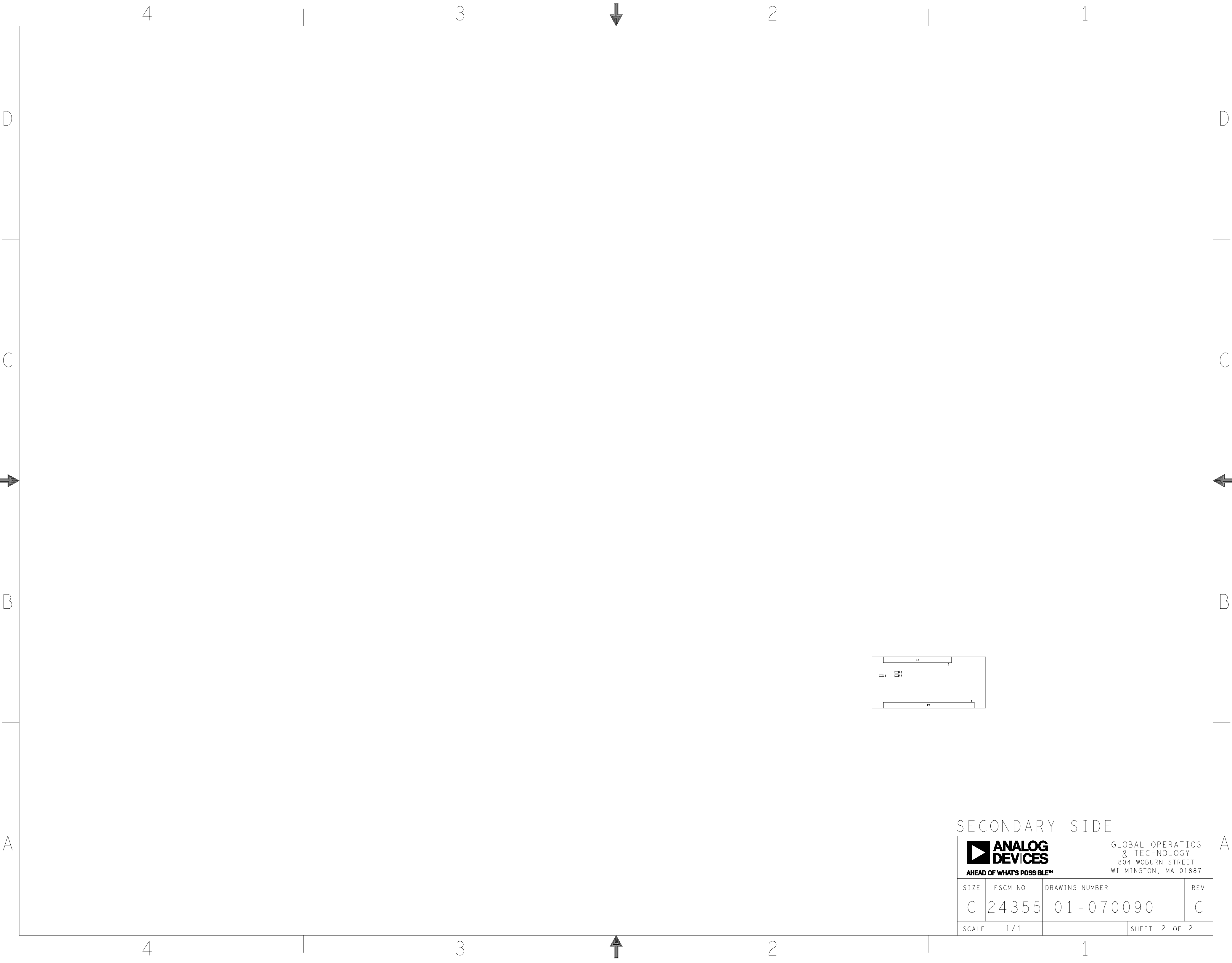
- 1. BOARD ACCEPTABILITY PER ANALOG DEVICES, INC. SPECIFICATION TST00119 (LATEST REVISION).
- 2. REPAIRS PER IPC-7711/21(LATEST REVISION) ARE ALLOWED.
- 3. REPAIRS ARE NOT ALLOWED IN SOLDERMASK FREE AREAS ON EITHER SIDE OF THE BOARD.
- 4. RoHS COMPLIANCE: ASSEMBLY VENDOR SHOULD ASSURE COMPLIANCE WITH LEAD-FREE AND RoHS PCB ASSEMBLY STANDARDS (EU RoHS DIRECTIVE 2002/95/EC).
- 5. INSTALL SHUNTS (M029337) ON PINS 1 & 2 FOR: P2, P4, P5
- 6. SINGULATE BOARDS AFTER ASSEMBLY PROCESS.
- 7. SMOOTHEN EDGES AND FREE FROM BURRS AFTER DEPANELIZATION PROCESS.



REVISIONS			
REV	DESCRIPTION	DATE	APPROVED
A	INITIAL RELEASE	28JAN22	R. EUSTACIO
B	CHANGES AS PER ECR-108013	11AUG22	R. EUSTACIO
C	CHANGES AS PER ECR-112383	10JAN23	R. EUSTACIO

PRIMARY SIDE

UNLESS OTHERWISE SPECIFIED DIMENSIONS ARE IN INCHES			APPROVAL		DATE		<div><div><div><div></div><div>ANALOG DEVICES</div><div>AHEAD OF WHAT'S POSSIBLE™</div></div><div>GLOBAL OPERATIONS & TECHNOLOGY 804 WOBURN STREET WILMINGTON, MA 01887</div></div></div>							
TOLERANCES			TEMPLATE ENGINEER											
DECIMALS	FRACTIONS	ANGLES	HARDWARE SERVICES		28JAN22		TITLE ASSEMBLY FTHR - PMD - INTZ CUSTOMER EVALUATION Z							
XX .-.010	--1/32	-- 2	M. VALE											
XXX .-.005			HARDWARE SYSTEMS											
.XXXX .-.0050			TEST ENGINEER											
MATERIAL			COMPONENT ENGINEER N. BUENAFLOR		10JAN23									
							SIZE C							
			HARDWARE RELEASE K. JABATAN		28JAN22									
FINISH			PCB DESIGNER E. DELOS REYES		28JAN22									
			ENGINEER R. EUSTACIO		28JAN22									
			CHECKER											
DO NOT SCALE DWG							SCALE		1 / 1		DRAWING NUMBER		REV C	
											SHEET		1 OF 2	



SECONDARY SIDE

<div><div><div></div><div><div>ANALOG DEV CES</div><div>AHEAD OF WHAT'S POSSIBLE™</div></div></div><div>GLOBAL OPERATIOS & TECHNOLOGY 804 WOBURN STREET WILMINGTON, MA 01887</div></div>			
SIZE	FSCM NO	DRAWING NUMBER	REV
C	24355	01-070090	C
SCALE	1 / 1	SHEET 2 OF 2	